

# Section 09: Controlled Choice

*“The question is not whether we can afford to invest in every child; it is whether we can afford not to.”*

-Marian Wright Edelman  
*The Measure of Our Success*

# Theory of Action for Controlled Choice

In accordance with the Controlled Choice Memorandum, we will continue to implement the requirements of the Controlled Choice in order to provide parents and students, within certain parameters, the opportunity to choose the schools their children will attend. This process will be implemented and monitored by the Family Information Center, in consultation with Dr. Alves, in a manner which fosters community involvement and awareness.

# Family Information Center

- The Family Information Center began operations in 1998. The purpose of the Center was to centralize the Champaign Unit 4 School District's elementary student assignment process and to assist parents in making informed decisions regarding the schools they would like their children to attend based on available seats.
- This year the middle school "cluster model" was implemented for students entering 6th grade. The staff at the Center has continued to make the process of school selection as simple and informative as possible. The staff presented school choice options, assisted in the application process, arranged school tours and made community presentations and handled telephone inquiries.

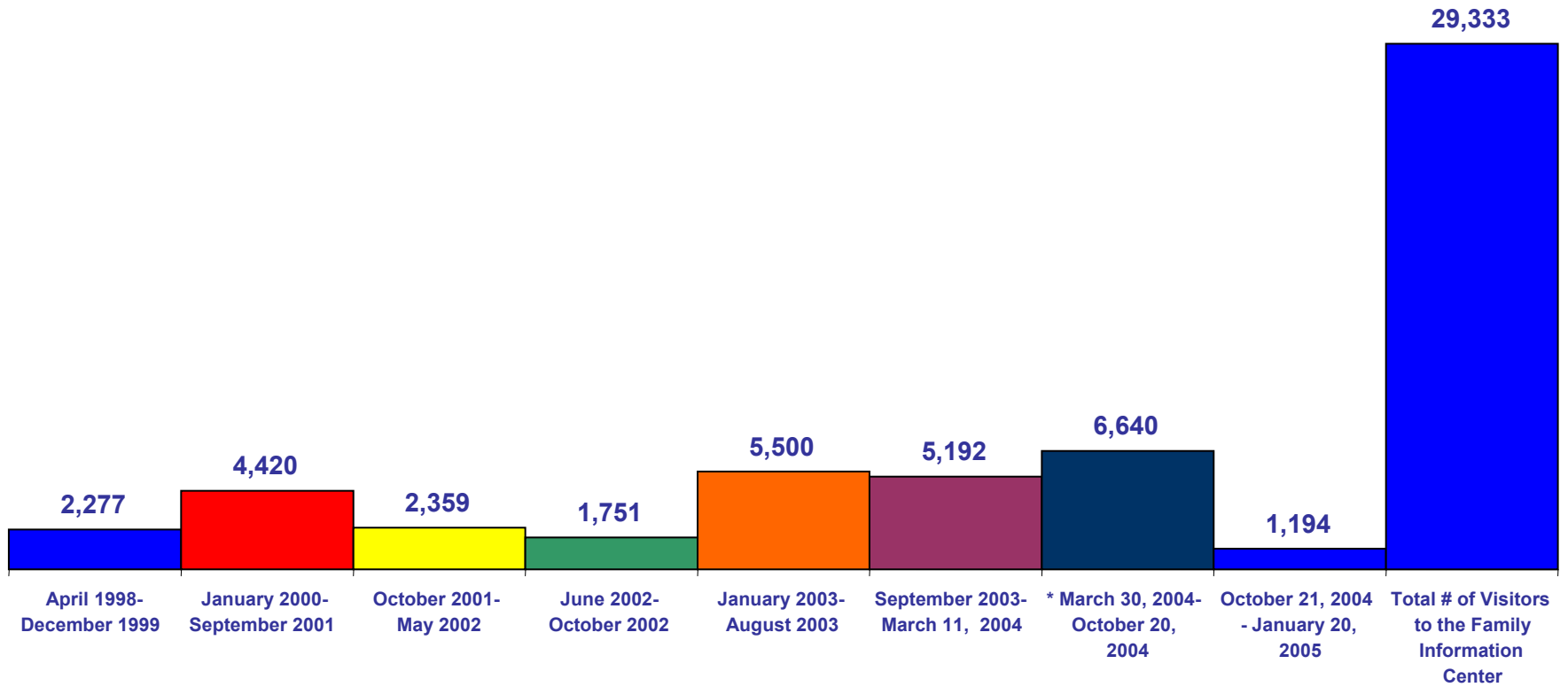
# Family Information Center

- The Family Information Center has progressed at a positive rate overall. One of the most impressive signs of change is the increased amount of service delivered to children and families.
- An additional staff member has been assigned to the Family Information Center to help with data, and transportation. This additional staff member also does the required Illinois State fingerprinting for the Unit 4 Human Resources Department at the Family Information Center.
- The District's Title I Parent Coordinator is currently housed at the Family Information Center has been instrumental in helping us with additional parental outreach and childcare during our Informational meetings.
- The District's Bilingual/ESL Director and the Latino Parent Liaison collaborated with the Schools of Choice Staff to translate flyers and brochures. The staff that make up the varied offices in the Family Information Center are comprised of a strong cohesive work unit who rely on each others expertise and moral support.

# Family Information Center

- This report shows that there has been an increased emphasis in the use and role that the Family Information Center has played in a relatively short period of time. The Family Information Center has become firmly established in the Champaign Community, and continues to expand throughout Champaign County into new areas that enhance family stability and well being.

### Champaign Schools Family Information Center Number of Visitors based on Sign-In Sheets January 20, 2005



# Ongoing Projects & Future Programs

- Each year the Family Information Center in conjunction with the eleven elementary schools holds two community forums and 3 elementary school tours (one held in the evening).
- An Informational Meeting was held at the Unit 4 Champaign Early Childhood Center on Wednesday, January 12, 2005. Approximately 43 families were in attendance and childcare was provided.
- On Monday, January 24, 2005, the first Community Forum was held in the north at Mt. Olive Baptist Church (2nd year at this location). The Douglass Center in North Champaign was used previously, however, because of the parking, acoustics and the usage of the Center for other activities, it was suggested that we find another site.
- The second Community Forum is scheduled at Temple Baptist Church in the south (7th year at this location) on Tuesday, February 15, 2005. (Currently the District is exploring the possibility of moving this forum to another sight.)
- In addition, interpreters will be at each community forum.

# Ongoing Projects & Future Programs

- The staff of the Family Information Center continues to take to heart the importance of community outreach in order to better serve our families and schools. As an example, Fred Clarke recently provided a list to Hattie Paulk of students that were either missing substantial time in school or dropped out of high school.
- Ms. Paulk immediately made contact with two of the families on the list and successfully encouraged them to re-enter school. She will accompany one child to the high school at the end of this month to re-enroll.

# Ongoing Projects & Future Programs

- The staff has developed a good working relationship with the various Medias in our community. The newspaper, radio and television stations have been very supportive and willing to help us broadcast upcoming events and programs.
- In addition, the weekly radio program the Director of the Center co-hosts, has been a valuable asset in notifying the public about Schools of Choice, Kindergarten Registration, the Voluntary Transfer Request Period and other important school related events and issues.
- For the 2nd year, Domino's Pizza will attach 4,000 Schools of Choice Informational flyers to pizza box tops (2 sided in English and Spanish).

# Ongoing Projects & Future Programs

- Christie Clinic donated 300 eyeglass frames to the Family Information Center since their Optical Department closed. These frames will be available for families in need. Families will only need to purchase the lenses.
- Staff continues to act as a catalyst for families in need of school or sports physical.
- In addition, the staff is working in conjunction with the Director of the Special Education and the District's Title I Parent Coordinator to have on-site Dental Exams at each of the eleven elementary schools.

# Ongoing Projects & Future Programs

- The “Warm-A-Kid” continues to be a huge success at the Family Information Center. Not only have children in Unit 4 schools received coats, hats and gloves, but the families in communities surrounding Champaign have also benefited from this worthwhile endeavor.
- The Family Information Center has become synonymous with this program and people actually place calls to the Center in early fall asking when we will start accepting donations.
- This year over 600 new and used coats purchased and distributed.
- The money received for the purchase of the coats is donated from businesses as well as individuals.
- The coats that were donated that children were not able to wear were donated to the Women’s Shelter and the Men’s Shelter.
- Families have also brought in clothing which are used year round in our clothing bank. Car seats, baby cribs, and new mattresses have also been donated to the Center which has been given to families in need.
- This year the Lions Club participated in our Annual “Warm-a-Kid” Drive for the 2nd year by collecting more than 500 pairs of socks for children.

# Ongoing Projects & Future Programs

- The Annual “Young Achievers” Award Ceremony will be held in May, 2005. This program is an effort between the Champaign Elementary Schools and the Champaign Schools Family Information Center to celebrate student achievement.
- Classroom teachers and Unit #4 employees are asked to nominate children for awards in various categories (i.e. Academic, Ambassador of Goodwill, etc.).
- The children and their parents receive awards at a special program held in the spring of each school year. This program has led to the increased involvement of minority parents.
- The “Young Achievers” program has fulfilled a need for children and their parents to receive acknowledgement for their accomplishments and successes in areas not typically recognized.

# Ongoing Projects & Future Programs

- We continue to act as a host site for the senior workers program (Experience Works).
- This program allows our African American senior worker to act as a Receptionist for the Family Information Center part-time.

# Housing/Enrollment Trends

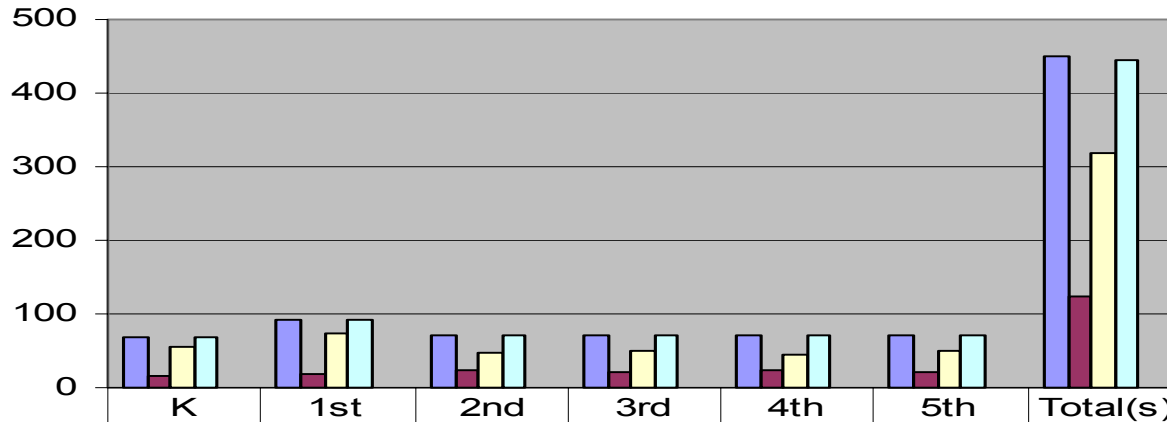
- As of January, 2005, the 54 year old Birch Village Public Housing (located at Bradley Avenue and extended from 4th to 5th Street) was demolished to make way for an upcoming new mixed income development.
- Douglass Square will be constructed with 50 units on the same site.
- The construction of Douglass Square will begin in March or April, 2005. The new development will have 27 buildings and most 2 story. It is projected to take approximately 1 year to complete.
- The Schools of Choice staff had previously done on-site registration at the Community Center at Birch Village. With the demolition of Birch Village, it will eliminate a captive African-American audience.
- The multiple family units, formerly known as Mansard Square apartment complex, are being replaced with single family homes, which means fewer children in those areas.

# Schools of Choice Elementary School Assignments As of January 7, 2005

## Barkstall Assignments as of January 7, 2005

School	Seat Cap.	02 Assg	Other Assg	Total Assg	% of 02 Assg
<b>K</b>	69	15	54	69	22%
<b>1st</b>	92	19	73	92	21%
<b>2nd</b>	72	25	47	72	35%
<b>3rd</b>	72	21	51	72	29%
<b>4th</b>	72	24	46	70	34%
<b>5th</b>	72	22	50	72	30%
<b>Total(s)</b>	<b>449</b>	<b>124</b>	<b>319</b>	<b>444</b>	<b>27%</b>

### Barkstall School Grades K-5

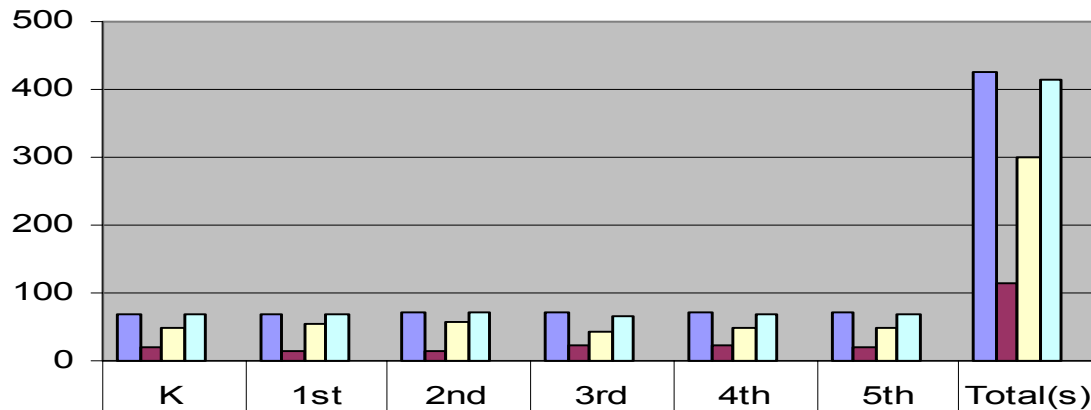


	K	1st	2nd	3rd	4th	5th	Total(s)
Seat Cap.	69	92	72	72	72	72	449
02 Assg.	15	19	25	21	24	22	124
Other Assg.	54	73	47	51	46	50	319
Total Assg.	69	92	72	72	70	72	444
% of 02 Assg.	22%	21%	35%	29%	34%	30%	27%

## Bottenfield Assignments as of January 7, 2005

School	Seat Cap.	02 Assg	Other Assg	Total Assg	% of 02 Assg
<b>K</b>	69	20	49	69	29%
<b>1st</b>	69	15	54	69	22%
<b>2nd</b>	72	15	56	71	21%
<b>3rd</b>	72	23	43	66	34%
<b>4th</b>	72	22	48	70	31%
<b>5th</b>	72	20	49	69	29%
<b>Total(s)</b>	<b>426</b>	<b>115</b>	<b>299</b>	<b>414</b>	<b>27%</b>

**Bottenfield School Grades K-5**

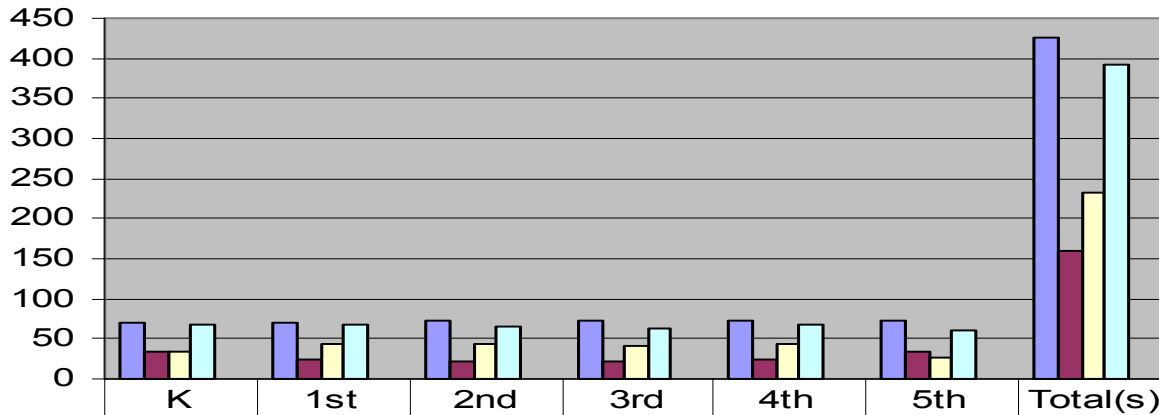


	K	1st	2nd	3rd	4th	5th	Total(s)
Seat Cap.	69	69	72	72	72	72	426
02 Assg.	20	15	15	23	22	20	115
Other Assg.	49	54	56	43	48	49	299
Total Assg.	69	69	71	66	70	69	414
% of 02 Assg.	29%	22%	21%	34%	31%	29%	27%

## Carrie Busey Assignments as of January 7, 2005

School	Seat Cap.	02 Assg	Other Assg	Total Assg	% of 02 Assg
<b>K</b>	69	33	35	68	48%
<b>1st</b>	69	25	43	68	37%
<b>2nd</b>	72	21	44	65	32%
<b>3rd</b>	72	22	40	62	35%
<b>4th</b>	72	25	43	68	37%
<b>5th</b>	72	33	27	60	55%
<b>Total(s)</b>	<b>426</b>	<b>159</b>	<b>232</b>	<b>391</b>	<b>41%</b>

### Carrie Busey School K-5



	K	1st	2nd	3rd	4th	5th	Total(s)
Seat Cap.	69	69	72	72	72	72	426
02 Assg.	33	25	21	22	25	33	159
Other Assg.	35	43	44	40	43	27	232
Total Assg.	68	68	65	62	68	60	391
% of 02 Assg.	48%	37%	32%	35%	37%	55%	41%

# Carrie Busey

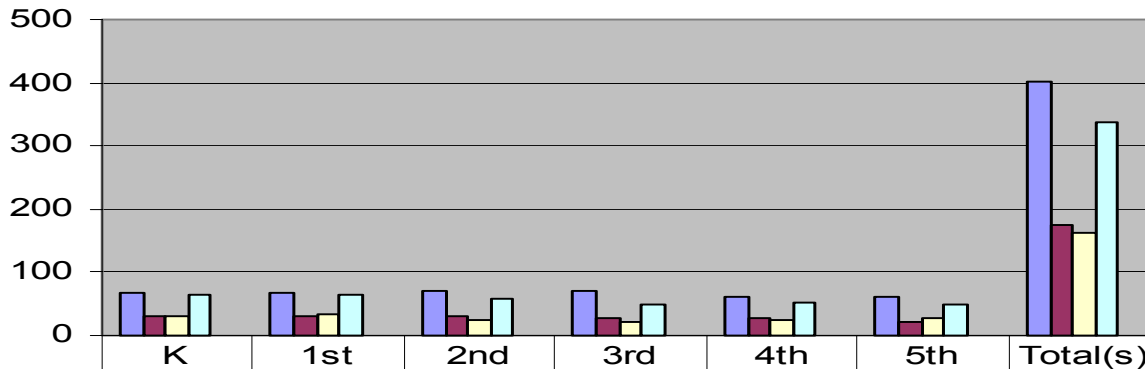
## Controlled Choice Principles

- 5th grade
- There were transfers requested and received for “others” out of Carrie Busey during the transfer lottery.
- Some families opted to transfer to Private Schools.
- Parents stated the reason for the transfer was because Carrie Busey did not feed into Jefferson Middle School.

## Dr. Howard Assignments as of January 7, 2005

School	Seat Cap.	02 Assg	Other Assg	Total Assg	% of 02 Assg
<b>K</b>	69	32	32	64	50%
<b>1st</b>	69	31	34	65	48%
<b>2nd</b>	72	32	26	58	55%
<b>3rd</b>	72	28	21	49	57%
<b>4th</b>	60	29	24	53	55%
<b>5th</b>	60	22	27	49	45%
<b>Total(s)</b>	<b>402</b>	<b>174</b>	<b>164</b>	<b>338</b>	<b>51%</b>

### Dr. Howard School K-5



	K	1st	2nd	3rd	4th	5th	Total(s)
Seat Cap.	69	69	72	72	60	60	402
02 Assg.	32	31	32	28	29	22	174
Other Assg.	32	34	26	21	24	27	164
Total Assg.	64	65	58	49	53	49	338
% of 02 Assg.	50%	48%	55%	57%	55%	45%	51%

# Dr. Howard

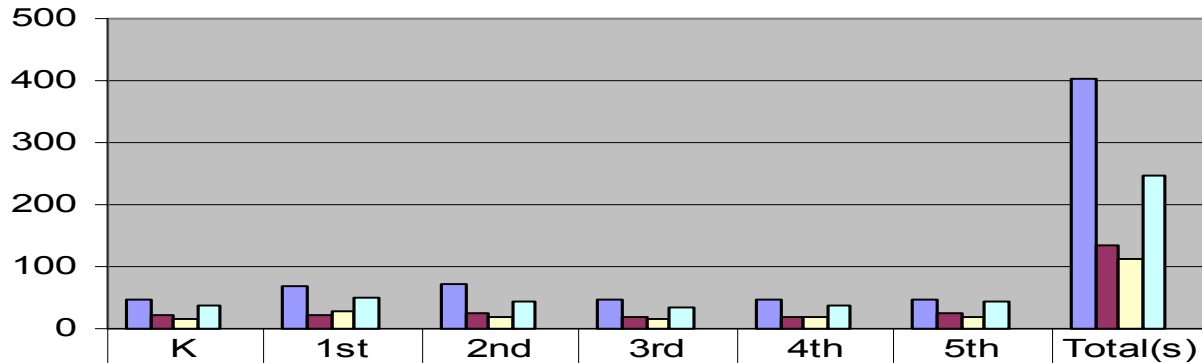
## Controlled Choice Principles

- 2nd 3rd and 4th grades
- There were transfers requested and received for “others” out of Dr. Howard during the transfer lottery as well as transfers granted for 02 students into Dr. Howard School.
- Some families opted for Private Schools.
- Parents stated a reason for the transfer was because Dr. Howard was a feeder school to Franklin Middle School.

## Garden Hills Assignments as of January 7, 2005

School	Seat Cap.	02 Assg	Other Assg	Total Assg	% of 02 Assg
<b>K</b>	46	22	17	39	56%
<b>1st</b>	69	23	27	50	46%
<b>2nd</b>	72	25	18	43	58%
<b>3rd</b>	48	18	16	34	53%
<b>4th</b>	48	20	18	38	52%
<b>5th</b>	48	26	18	44	60%
<b>Total(s)</b>	<b>402</b>	<b>134</b>	<b>114</b>	<b>248</b>	<b>54%</b>

**Graden Hills School K-5**



	K	1st	2nd	3rd	4th	5th	Total(s)
Seat Cap.	46	69	72	48	48	48	402
02 Assg.	22	23	25	18	20	26	134
other Assg.	17	27	18	16	18	18	114
Total Assg.	39	50	43	34	38	44	248
% of 02 Assg.	56%	46%	58%	53%	52%	60%	54%

# Garden Hills

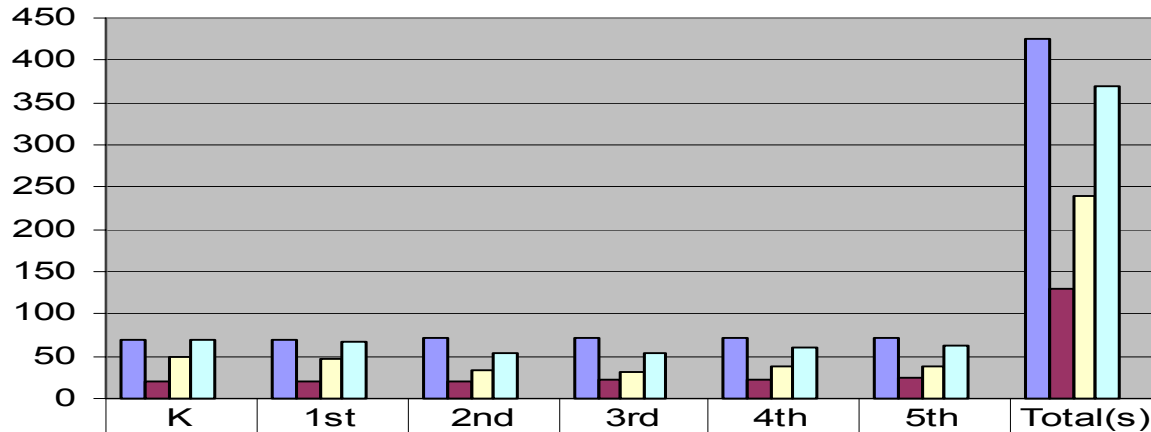
## Controlled Choice Principles

- Kindergarten
- All requests for Garden Hills Kindergarten were granted in the Kindergarten Lottery, which included all 02 applicants.
- Garden Hills Kindergarten was immediately out of compliance.
- Many “others” were assigned to Garden Hills as an alternative assignment when they did not receive any of their 3 choices, or if they registered late, which then changed the % of 02 students under 50%.
- We have since transferred 3 “other” kindergarten students out of Garden Hills Kindergarten per the wait list into their 1st Choice School.

## Kenwood Assignments as of January 7, 2005

School	Seat Cap.	02 Assg	Other Assg	Total Assg	% of 02 Assg
<b>K</b>	69	20	49	69	29%
<b>1st</b>	69	21	47	68	31%
<b>2nd</b>	72	21	33	54	39%
<b>3rd</b>	72	22	32	54	41%
<b>4th</b>	72	22	39	61	36%
<b>5th</b>	72	24	39	63	38%
<b>Total(s)</b>	<b>426</b>	<b>130</b>	<b>239</b>	<b>369</b>	<b>35%</b>

**Kenwood School K-5**

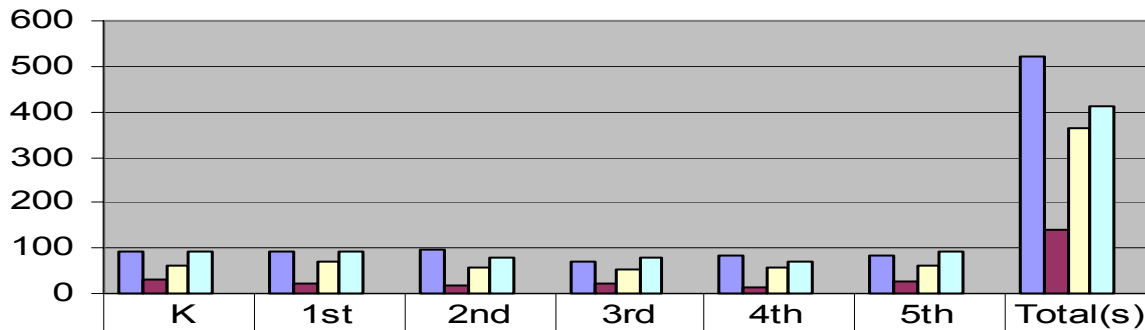


	K	1st	2nd	3rd	4th	5th	Total(s)
Seat Cap.	69	69	72	72	72	72	426
02 Assg.	20	21	21	22	22	24	130
Other Assg.	49	47	33	32	39	39	239
Total Assg.	69	68	54	54	61	63	369
% of 02 Assg.	29%	31%	39%	41%	36%	38%	35%

## Robeson Assignments as of January 7, 2005

School	Seat Cap.	02 Assg	Other Assg	Total Assg	% of 02 Assg
<b>K</b>	92	31	61	92	34%
<b>1st</b>	92	22	71	93	24%
<b>2nd</b>	96	18	59	77	23%
<b>3rd</b>	72	24	54	78	31%
<b>4th</b>	84	15	56	71	21%
<b>5th</b>	84	28	63	91	31%
<b>Total(s)</b>	<b>520</b>	<b>138</b>	<b>364</b>	<b>410</b>	<b>34%</b>

**Robeson School Grade K-5**

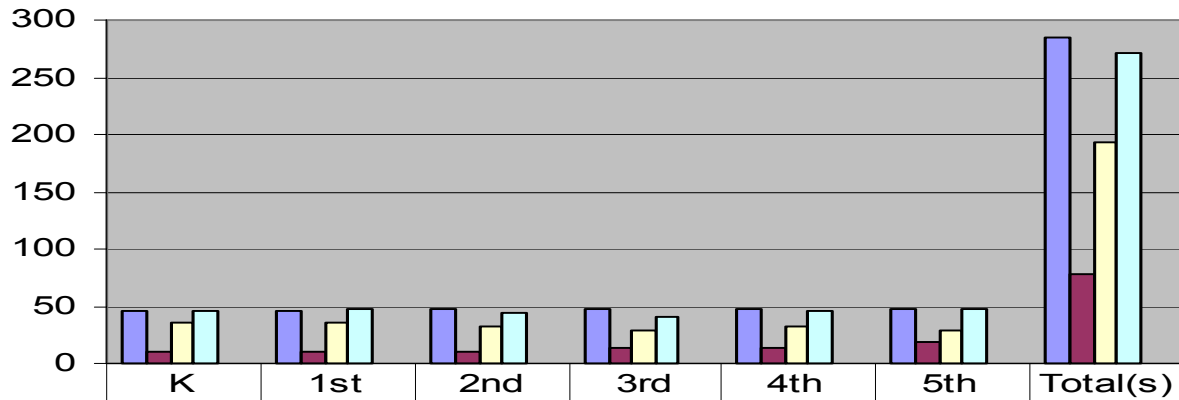


	K	1st	2nd	3rd	4th	5th	Total(s)
Seat Cap.	92	92	96	72	84	84	520
02 Assg.	31	22	18	24	15	28	138
Other Assg.	61	71	59	54	56	63	364
Total Assg.	92	93	77	78	71	91	410
% of 02 Assg.	34%	24%	23%	31%	21%	31%	34%

## South Side Assignments as of January 7, 2005

School	Seat Cap.	02 Assg	Other Assg	Total Assg	% of 02 Assg
<b>K</b>	46	11	35	46	24%
<b>1st</b>	46	11	36	47	23%
<b>2nd</b>	48	11	33	44	25%
<b>3rd</b>	48	13	28	41	32%
<b>4th</b>	48	14	32	46	30%
<b>5th</b>	48	18	29	47	38%
<b>Total(s)</b>	<b>284</b>	<b>78</b>	<b>193</b>	<b>271</b>	<b>29%</b>

**South Side School Garde K-5**

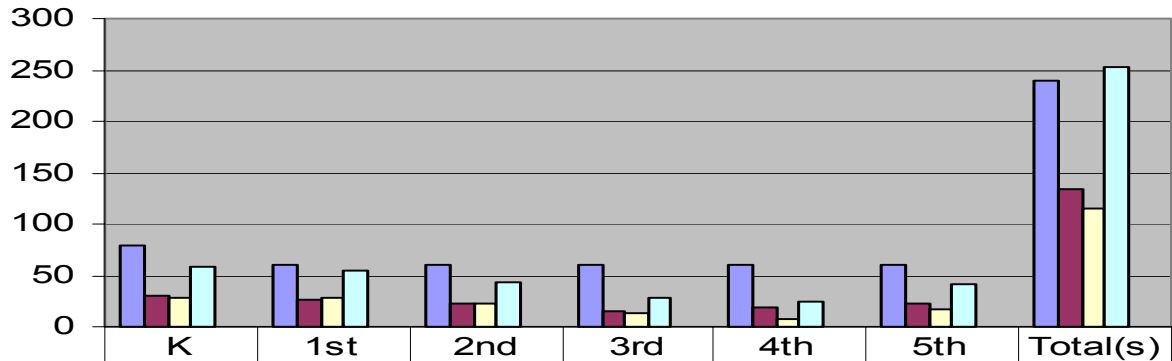


	K	1st	2nd	3rd	4th	5th	Total(s)
Seat Cap.	46	46	48	48	48	48	284
02 Assg.	11	11	11	13	14	18	78
Other Assg.	35	36	33	28	32	29	193
Total Assg.	46	47	44	41	46	47	271
% of 02 Assg.	24%	23%	25%	32%	30%	38%	29%

### Stratton Assignments as of January 7, 2005

School	Seat Cap.	02 Assg	Other Assg	Total Assg	% of 02 Assg
<b>K</b>	80	31	28	59	52%
<b>1st</b>	60	26	29	55	47%
<b>2nd</b>	60	22	22	44	50%
<b>3rd</b>	60	15	13	28	53%
<b>4th</b>	60	18	7	25	72%
<b>5th</b>	60	22	17	41	54%
<b>Total(s)</b>	<b>240</b>	<b>134</b>	<b>116</b>	<b>252</b>	<b>53%</b>

**Stratton School K-5**



	K	1st	2nd	3rd	4th	5th	Total(s)
Seat Cap.	80	60	60	60	60	60	240
02 Assg.	31	26	22	15	18	22	134
Other Assg.	28	29	22	13	7	17	116
Total Assg.	59	55	44	28	25	41	252
% of 02 Assg.	52%	47%	50%	53%	72%	54%	53%

# Stratton

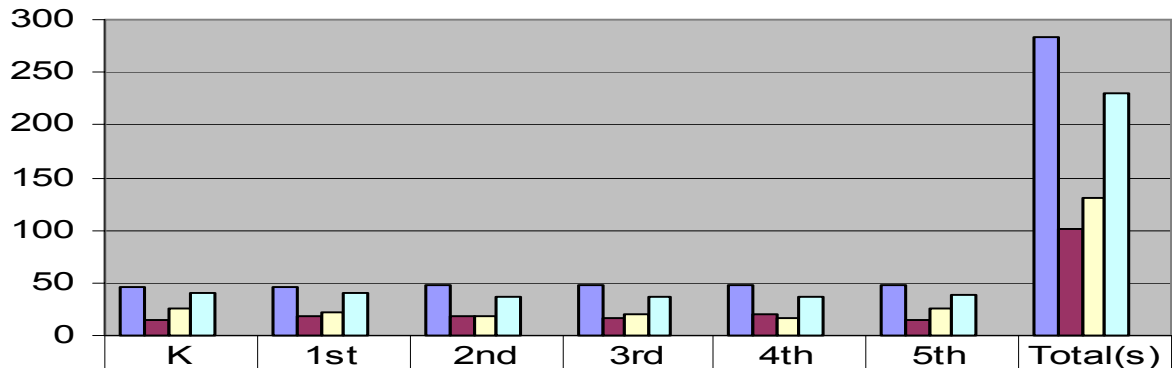
## Controlled Choice Principles

- Kindergarten
- All requests for Stratton Kindergarten were granted in the Kindergarten Lottery, which included all 02 applicants.
- Stratton Kindergarten was immediately out of compliance. Many “others” were assigned to Stratton as an alternative assignment if they did not receive any of their 3 choices or if they registered late, which then changed the % of 02 students under 50%.
- When the capacity was raised from 60 to 80 for Stratton Kindergarten, transferred were granted for 02 students on the wait list. Two families accepted. Yet Stratton Kindergarten was still less than 50% for 02 students.
- We have since transferred 2 “other” Kindergarten students out of Stratton Kindergarten per the wait list into their 1st Choice School.
- 2nd 3rd 4th and 5th grades
- All were previously out of compliance in 2003-2004
- All transfer requests for Stratton have been granted in the Transfer Lottery every year. This includes all 02 applicants.
- All transfers out of Stratton for “others” were granted in the Transfer Lottery.

## Washington Assignments as of January 7, 2005

School	Seat Cap.	02 Assg	Other Assg	Total Assg	% of 02 Assg
<b>K</b>	46	15	26	41	36%
<b>1st</b>	46	18	22	40	45%
<b>2nd</b>	48	18	19	37	48%
<b>3rd</b>	48	16	20	36	44%
<b>4th</b>	48	20	17	37	54%
<b>5th</b>	48	14	26	39	36%
<b>Total(s)</b>	<b>284</b>	<b>101</b>	<b>130</b>	<b>230</b>	<b>44%</b>

### Washington School K-5

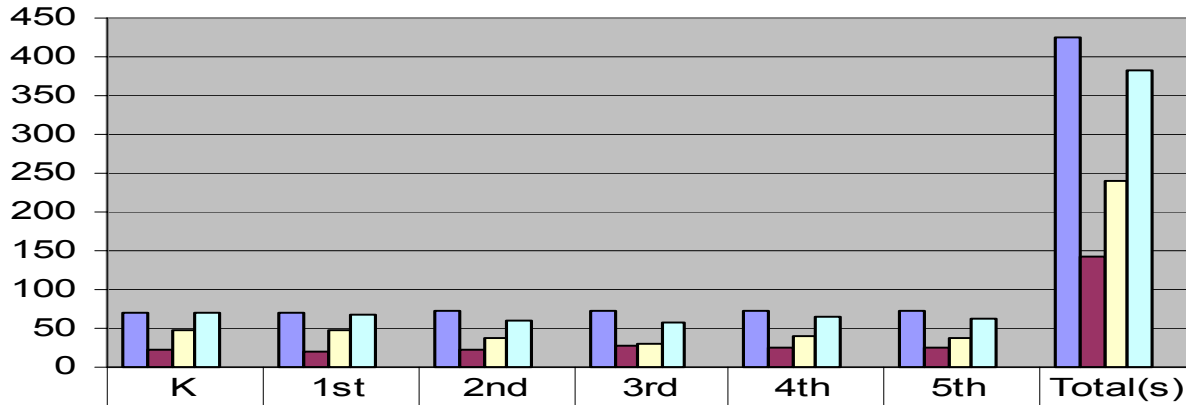


	K	1st	2nd	3rd	4th	5th	Total(s)
Seat Cap.	46	46	48	48	48	48	284
02 Assg.	15	18	18	16	20	14	101
Other Assg.	26	22	19	20	17	26	130
Total Assg.	41	40	37	36	37	39	230
% of 02 Assg.	36%	45%	48%	44%	54%	36%	44%

## Westview Assignments as of January 7, 2005

School	Seat Cap.	02 Assg	Other Assg	Total Assg	% of 02 Assg
<b>K</b>	69	22	47	69	32%
<b>1st</b>	69	20	48	68	29%
<b>2nd</b>	72	23	38	61	38%
<b>3rd</b>	72	27	31	58	46%
<b>4th</b>	72	25	39	64	40%
<b>5th</b>	72	25	38	63	40%
<b>Total(s)</b>	<b>426</b>	<b>142</b>	<b>241</b>	<b>383</b>	<b>37%</b>

**Westview School K-5**

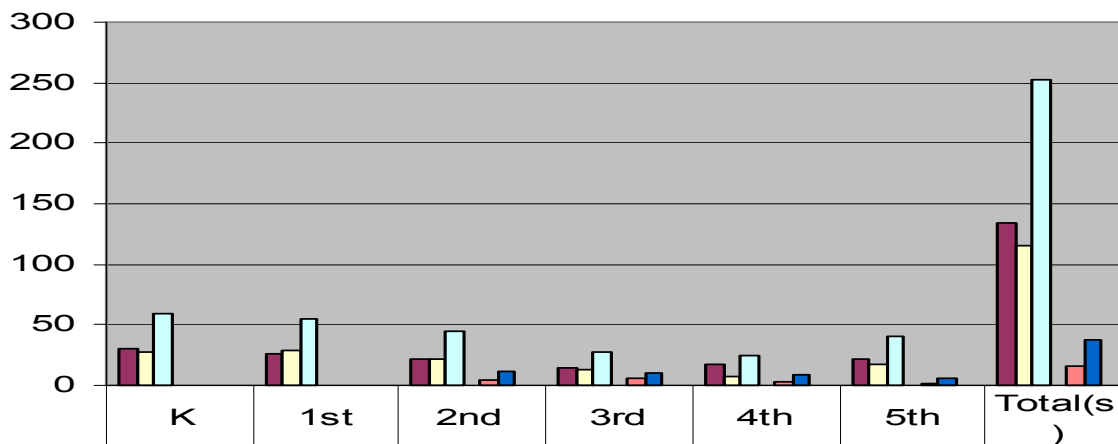


	K	1st	2nd	3rd	4th	5th	Total(s)
Seat Cap.	69	69	72	72	72	72	426
02 Assg.	22	20	23	27	25	25	142
Other Assg.	47	48	38	31	39	38	241
Total Assg.	69	68	61	58	64	63	383
% of 02 Assg.	32%	29%	38%	46%	40%	40%	37%

# Stratton Assignments including Gifted as of January 7, 2005

School	02 Assg	Other Assg	Total Assg	% of 02 Assg	02 Gifted	Other Gifted	% of 02 w/gifted
<b>K</b>	31	28	59	52%			
<b>1st</b>	26	29	55	46%			
<b>2nd</b>	22	22	44	50%	5	12	42%
<b>3rd</b>	15	13	28	54%	6	10	47%
<b>4th</b>	18	7	25	72%	3	9	56%
<b>5th</b>	22	17	41	54%	2	6	51%
<b>Total(s)</b>	<b>134</b>	<b>116</b>	<b>252</b>	<b>53%</b>	<b>16</b>	<b>37</b>	<b>49%</b>

**Stratton School  
Grades K - 5 including Gifted**

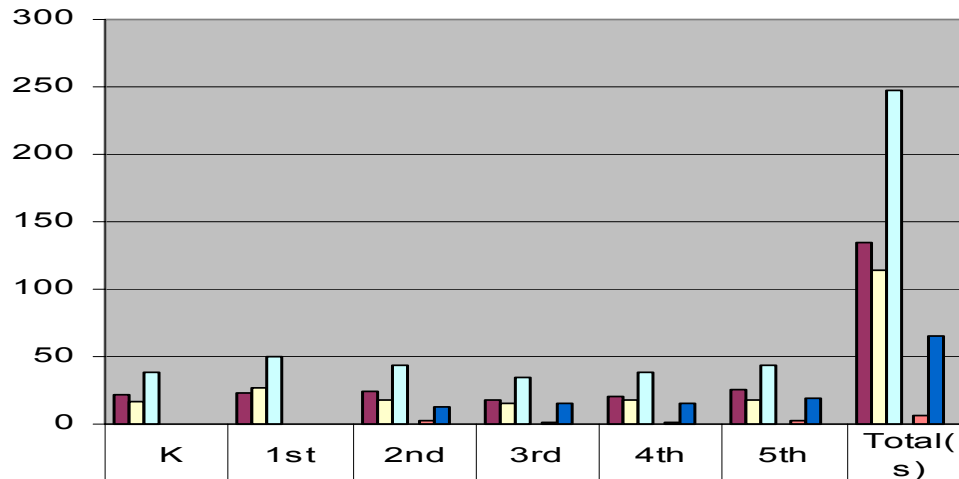


	K	1st	2nd	3rd	4th	5th	Total(s)
02 Assg	31	26	22	15	18	22	134
Other Assg	28	29	22	13	7	17	116
Total Assg	59	55	44	28	25	41	252
% of 02 Assg	52%	46%	50%	54%	72%	54%	53%
02 Gifted			5	6	3	2	16
Other Gifted			12	10	9	6	37
% Of 02 w/gifted			42%	47%	56%	51%	49%

**Garden Hills Assignments including Gifted as of January 7, 2005**

School	02 Assg	Other Assg	Total Assg	02 Assg	02 Gifted	Other Gifted	% Of 02 w/gifted
<b>K</b>	22	17	39	56%			
<b>1st</b>	23	27	50	46%			
<b>2nd</b>	25	18	43	58%	2	13	46%
<b>3rd</b>	18	16	34	53%	1	16	37%
<b>4th</b>	20	18	38	53%	1	15	40%
<b>5th</b>	26	18	44	59%	2	19	43%
<b>Total(s)</b>	<b>134</b>	<b>114</b>	<b>248</b>	<b>53%</b>	<b>6</b>	<b>65</b>	<b>43%</b>

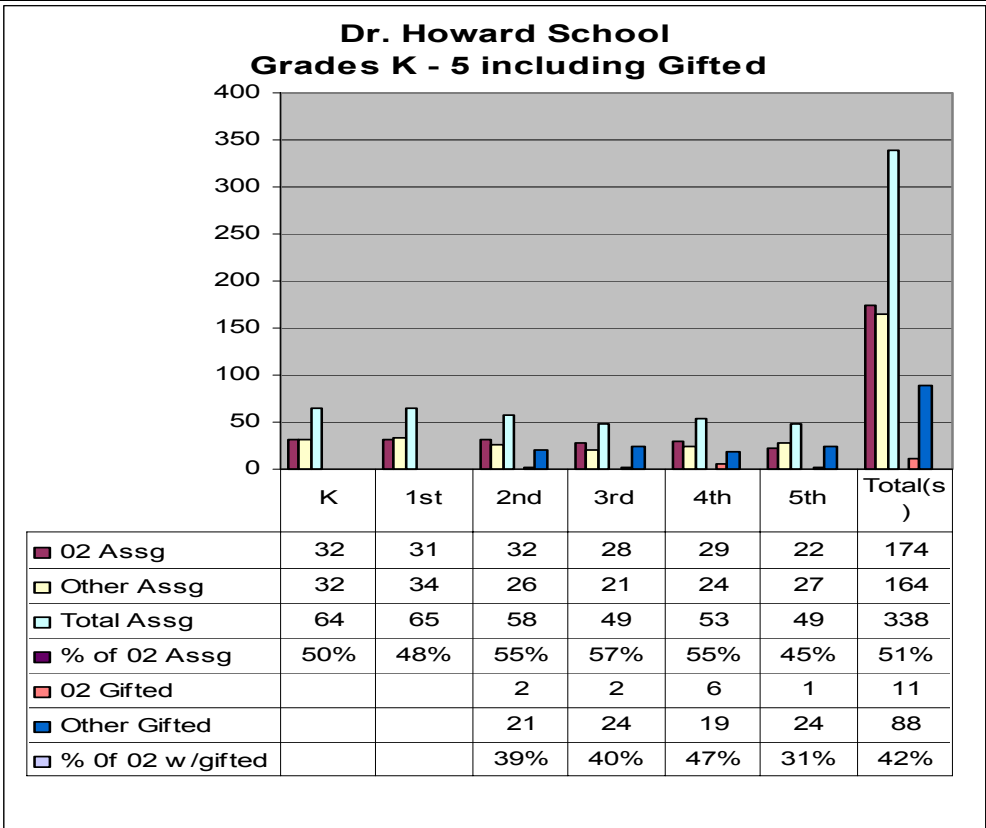
**Garden Hills School  
Grades K - 5 including Gifted**



02 Assg	22	23	25	18	20	26	134
Other Assg	17	27	18	16	18	18	114
Total Assg	39	50	43	34	38	44	248
% of 02 Assg	56%	46%	58%	53%	53%	59%	53%
02 Gifted			2	1	1	2	6
Other Gifted			13	16	15	19	65
% Of 02 w/gifted			46%	37%	40%	43%	43%

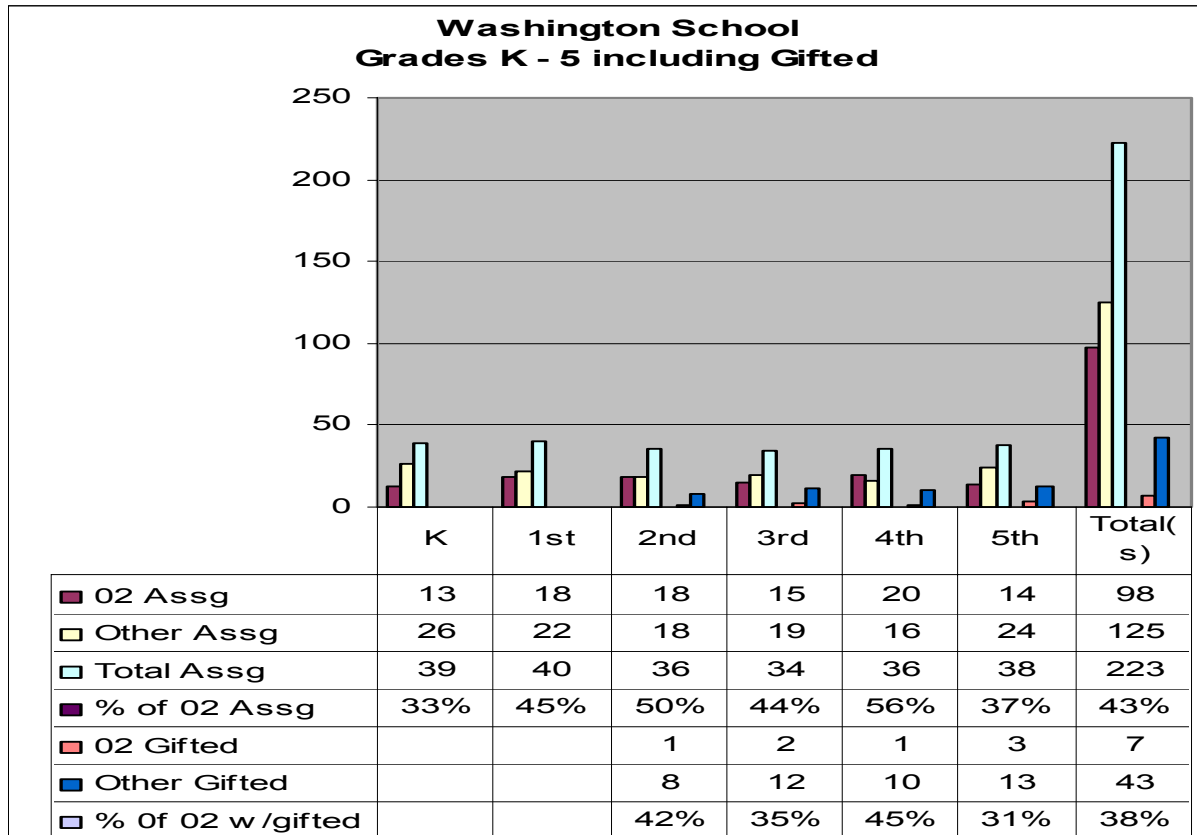
## Dr. Howard Assignments including Gifted as of January 7, 2005

School	02 Assg	Other Assg	Total Assg	% of 02 Assg	02 Gifted	Other Gifted	% Of 02 w/gifted
<b>K</b>	32	32	64	50%			
<b>1st</b>	31	34	65	48%			
<b>2nd</b>	32	26	58	55%	2	21	39%
<b>3rd</b>	28	21	49	57%	2	24	40%
<b>4th</b>	29	24	53	55%	6	19	47%
<b>5th</b>	22	27	49	45%	1	24	31%
<b>Total(s)</b>	<b>174</b>	<b>164</b>	<b>338</b>	<b>51%</b>	<b>11</b>	<b>88</b>	<b>42%</b>



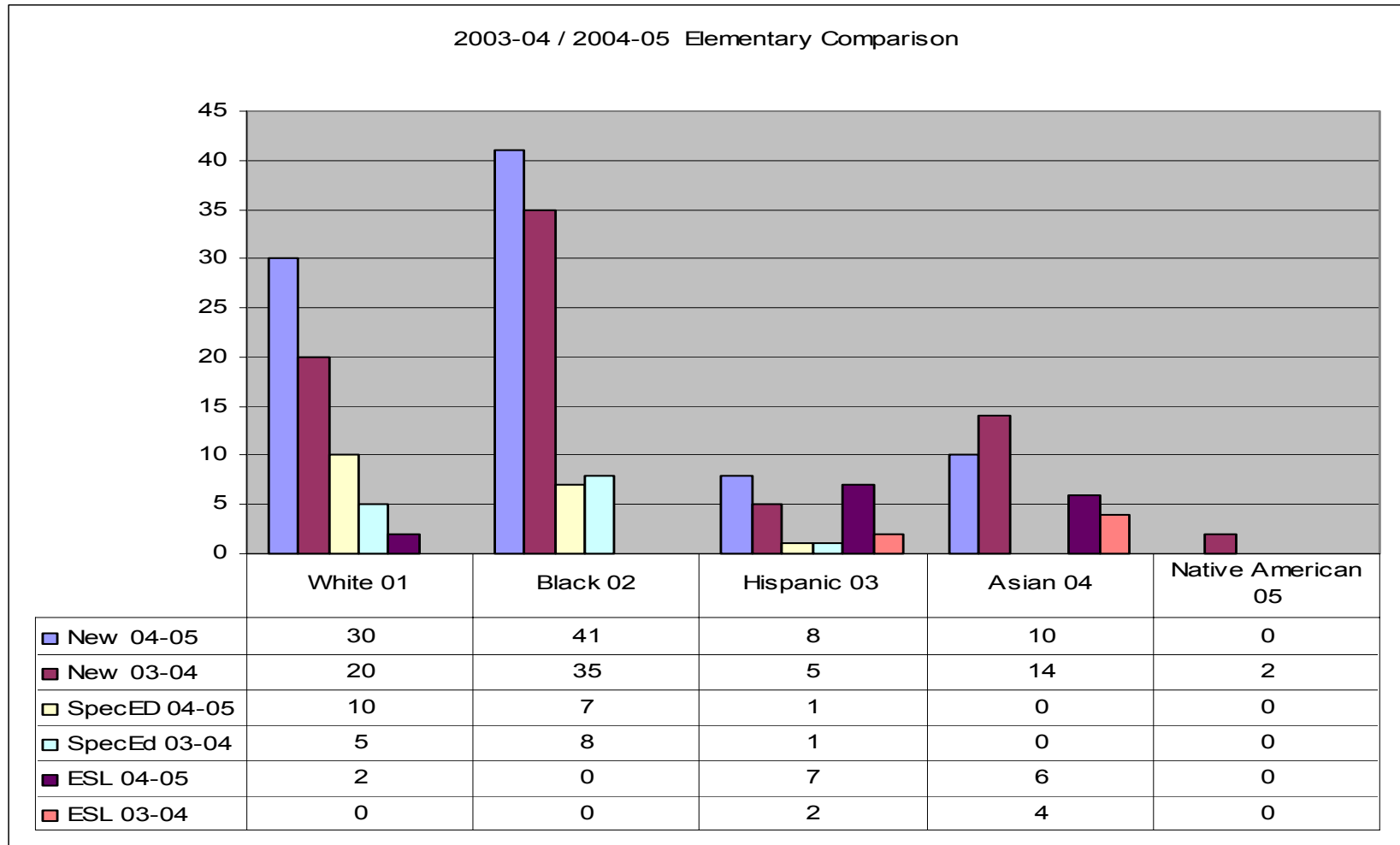
## Washington Assignments including Gifted as of January 7, 2004

School	02 Assg	Other Assg	Total Assg	% of 02 Assg	02 Gifted	Other Gifted	% Of 02 w/gifted
<b>K</b>	13	26	39	33%			
<b>1st</b>	18	22	40	45%			
<b>2nd</b>	18	18	36	50%	1	8	42%
<b>3rd</b>	15	19	34	44%	2	12	35%
<b>4th</b>	20	16	36	56%	1	10	45%
<b>5th</b>	14	24	38	37%	3	13	31%
<b>Total(s)</b>	<b>98</b>	<b>125</b>	<b>223</b>	<b>43%</b>	<b>7</b>	<b>43</b>	<b>38%</b>



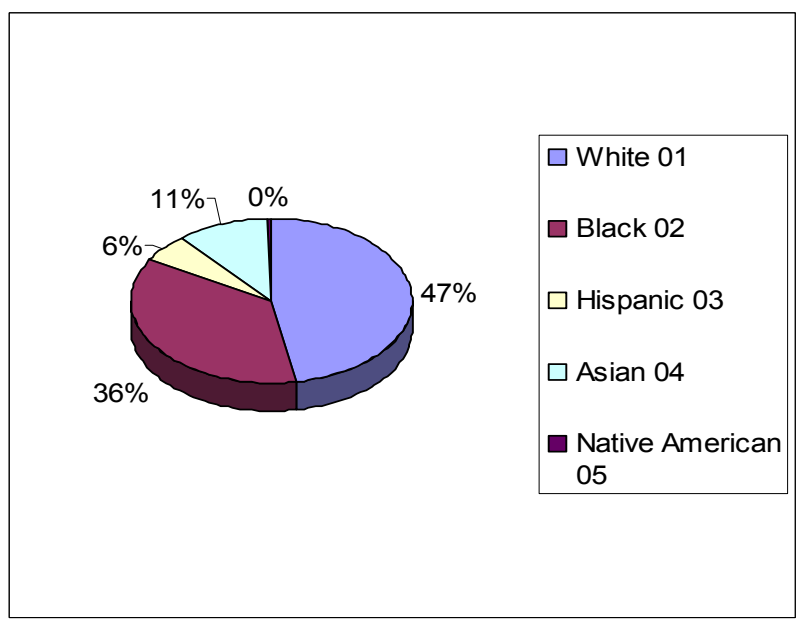
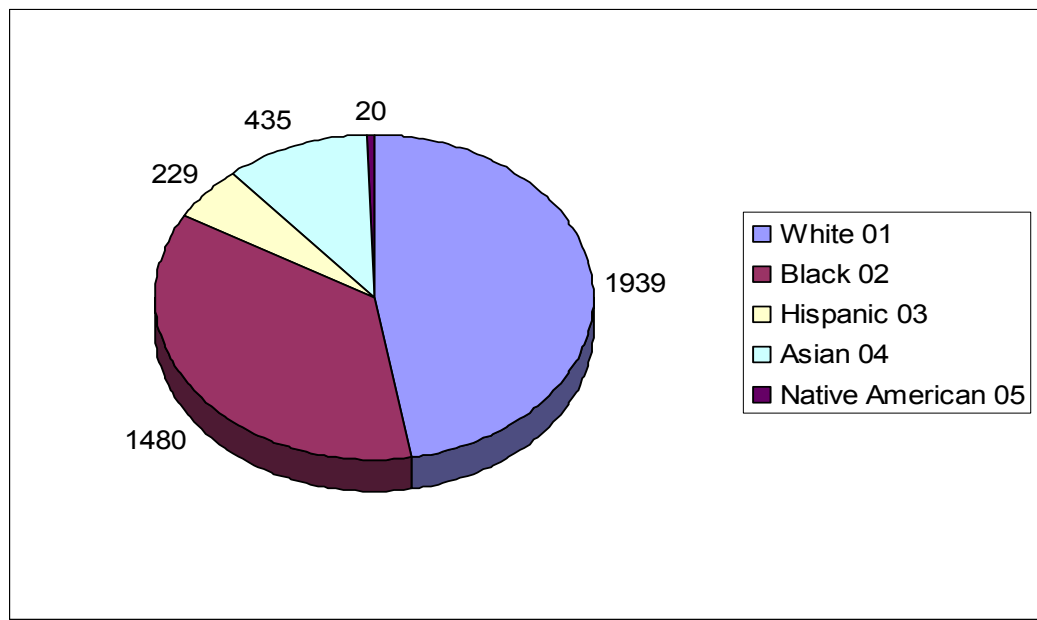
**2003-04/ 2004-05 Elementary Comparison November 1, 2004 Thru. January 7, 2005**

Ethnicity	New 04-05	New 03-04	SpecED 04-05	SpecED 03-04	ESL 04-05	ESL 03-04
<b>White 01</b>	<b>30</b>	<b>20</b>	<b>10</b>	<b>5</b>	<b>2</b>	<b>0</b>
<b>Black 02</b>	<b>41</b>	<b>35</b>	<b>7</b>	<b>8</b>	<b>0</b>	<b>0</b>
<b>Hispanic</b>	<b>8</b>	<b>5</b>	<b>1</b>	<b>1</b>	<b>7</b>	<b>2</b>
<b>Asian 04</b>	<b>10</b>	<b>14</b>	<b>0</b>	<b>0</b>	<b>6</b>	<b>4</b>
<b>Native Am</b>	<b>0</b>	<b>2</b>	<b>0</b>	<b>0</b>	<b>0</b>	<b>0</b>



# Elementary School Ethnic Breakdown as of January 7, 2005

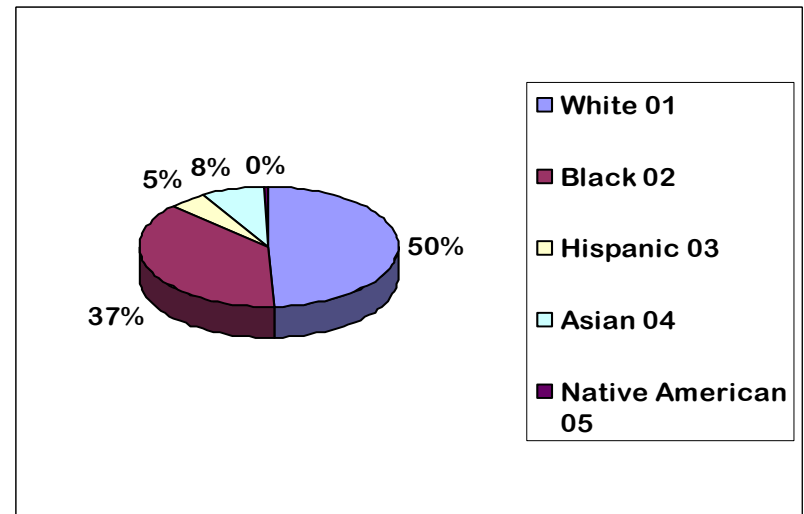
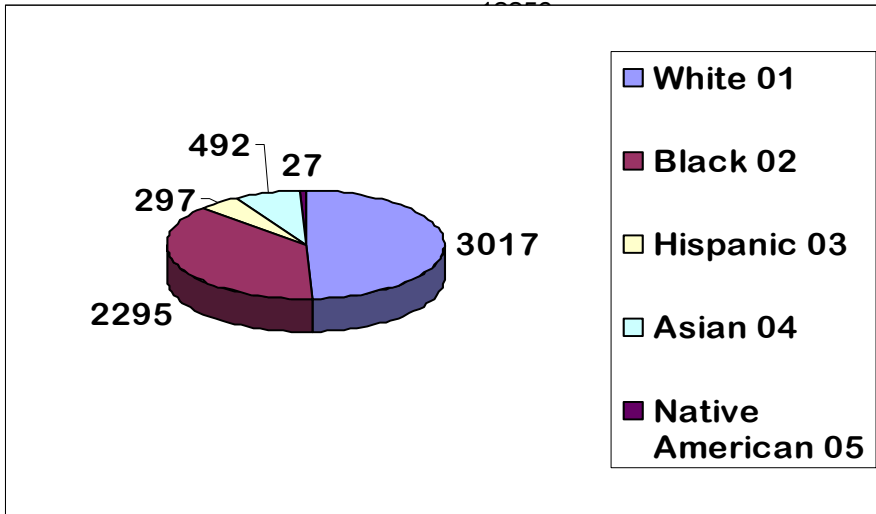
Ethnic Code	BA	BO	CB	DH	GH	KW	RO	SS	ST	WA	WV	Totals
White 01	235	228	166	202	116	210	317	170	86	39	170	1939
Black 02	126	115	163	184	151	127	138	79	148	108	141	1480
Hispanic 03	13	14	16	12	14	6	8	7	13	103	23	229
Asian 04	70	53	48	41	48	20	33	14	45	21	42	435
Native American 05	2	2	2	0	2	0	1	0	7	2	2	20
<b>Totals</b>	<b>446</b>	<b>412</b>	<b>395</b>	<b>439</b>	<b>331</b>	<b>363</b>	<b>497</b>	<b>270</b>	<b>299</b>	<b>273</b>	<b>378</b>	<b>4103</b>



Controlled Choice numbers account for students on Sabbatical, Inclusive Gifted Classrooms, Self-Contained BD and students at Alternative Schools who will return to Home School.

**Elementary and Middle School Ethnic Breakdown as of June 5, 2004 End Of Year**

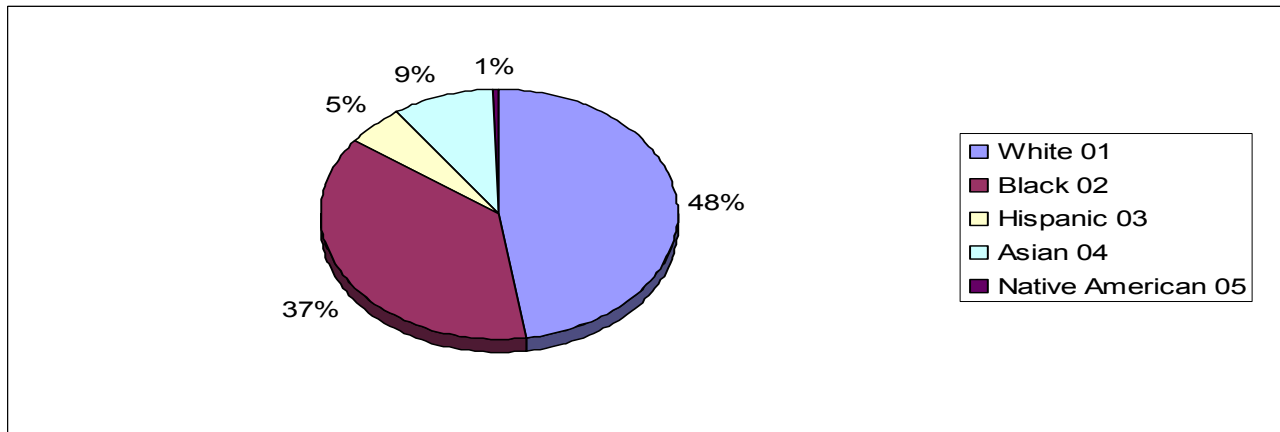
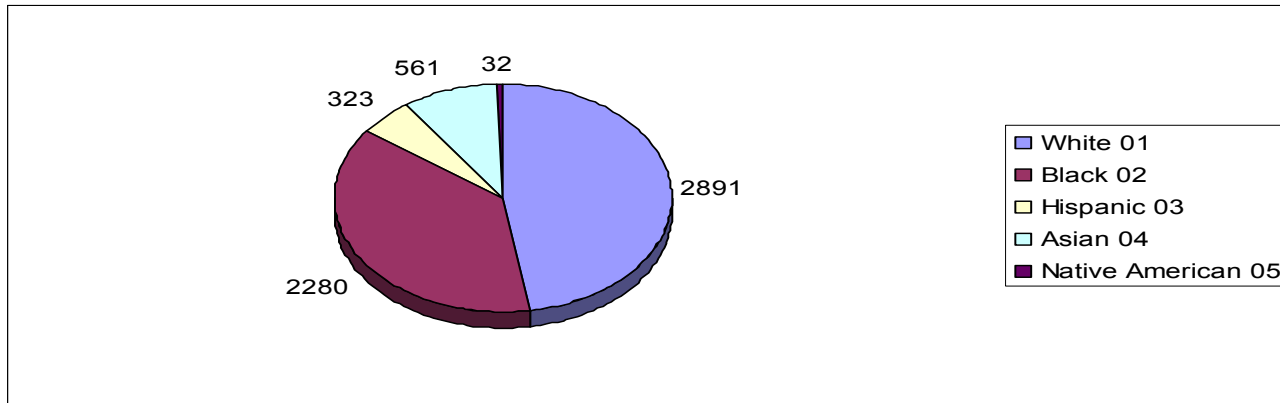
Ethnic Code	Totals
White 01	3017
Black 02	2295
Hispanic 03	297
Asian 04	492
Native American 05	27
<b>Totals</b>	<b>6128</b>



## Elementary and Middle School Ethnic Breakdown - Combined

Ethnic Code	Totals
<b>White 01</b>	<b>2891</b>
<b>Black 02</b>	<b>2280</b>
<b>Hispanic 03</b>	<b>323</b>
<b>Asian 04</b>	<b>561</b>
<b>Native American 05</b>	<b>32</b>

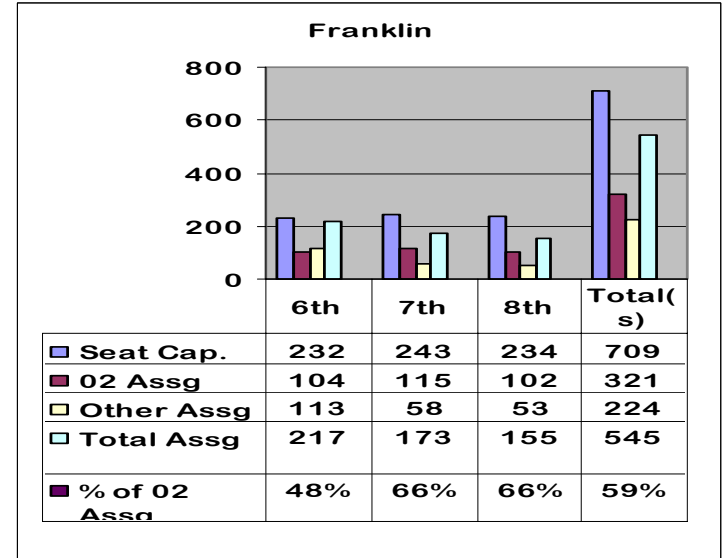
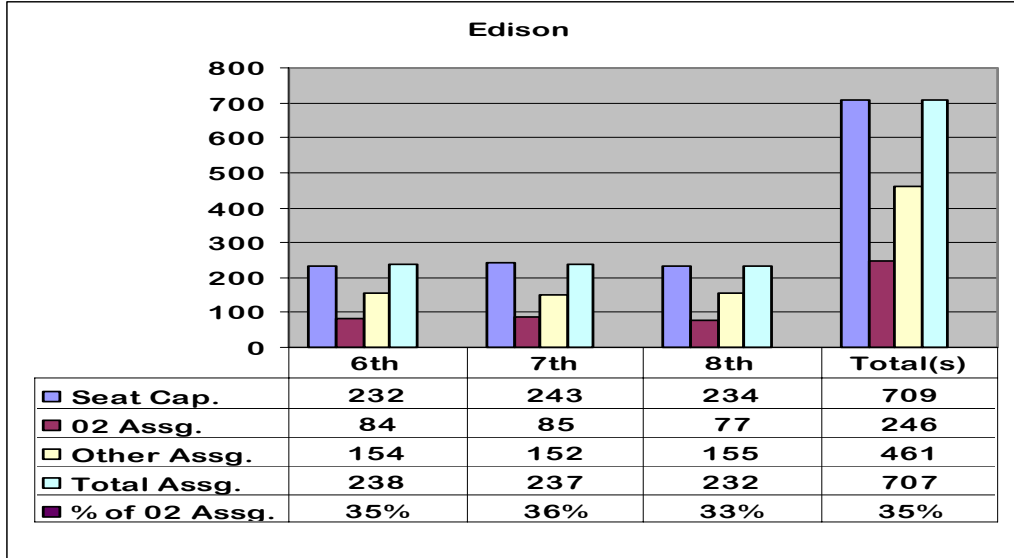
Controlled Choice numbers account for students on Sabbatical, Inclusive Gifted, Self-Contained BD, and students at Alternative Schools who will return to Home School.



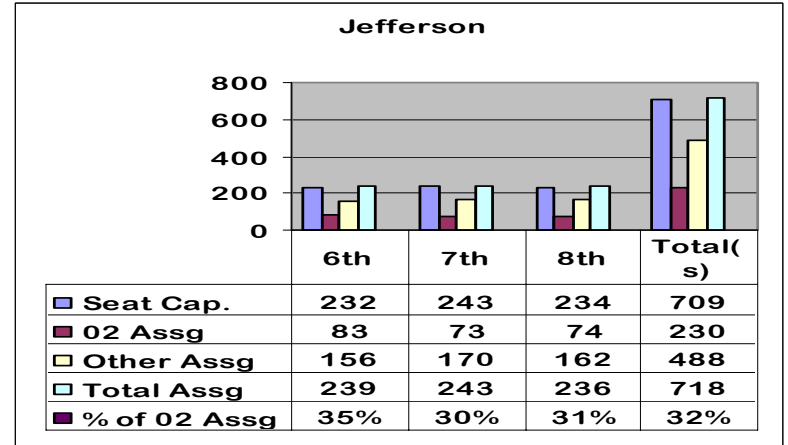
# Schools of Choice Middle School Assignments As of January 7, 2005

**Middle School Assignments as of January 7, 2005**

School	Seat Cap.	02 Assg	Other Assg	Total Assg	% of 02 Assg	School	Seat Cap.	02 Assg	Other Assg	Total Assg	% of 02 Assg
<b>Edison</b>						<b>Franklin</b>					
6th	232	84	154	238	35%	6th	232	104	113	217	48%
7th	243	85	152	237	36%	7th	243	115	58	173	66%
8th	234	77	155	232	33%	8th	234	102	53	155	66%
<b>Total(s)</b>	<b>709</b>	<b>246</b>	<b>461</b>	<b>707</b>	<b>35%</b>	<b>Total(s)</b>	<b>709</b>	<b>321</b>	<b>224</b>	<b>545</b>	<b>59%</b>

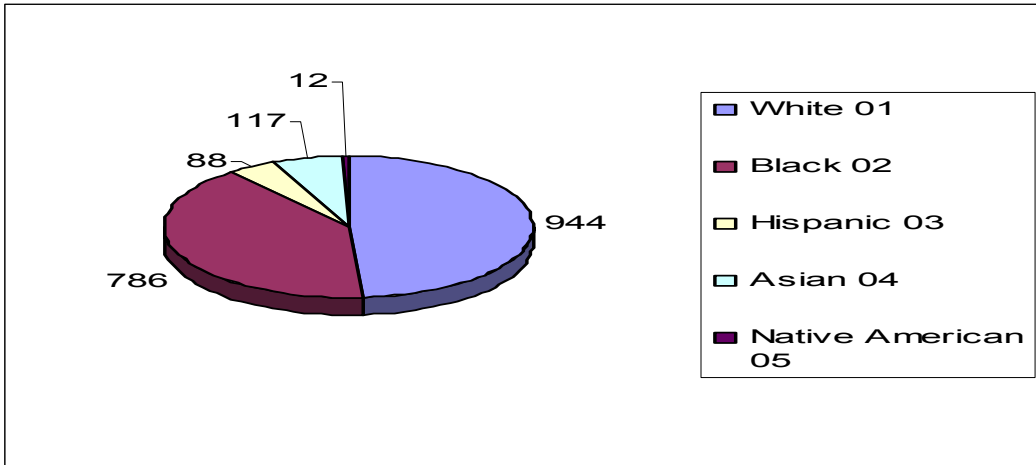


School	Seat Cap.	02 Assg	Other Assg	Total Assg	% of 02 Assg
<b>Jefferson</b>					
6th	232	83	156	239	35%
7th	243	73	170	243	30%
8th	234	74	162	236	31%
<b>Total(s)</b>	<b>709</b>	<b>230</b>	<b>488</b>	<b>718</b>	<b>32%</b>

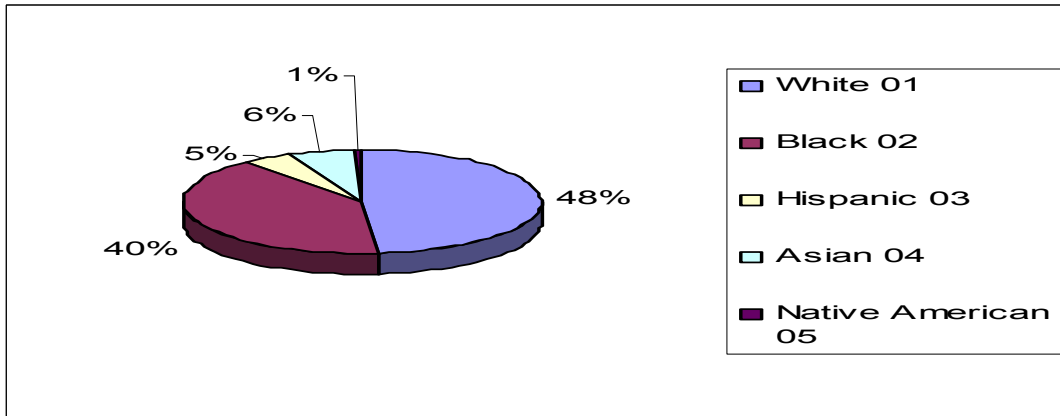


### Middle School Ethnic Breakdown as of January 7, 2005

Ethnic Code	ED	FR	JF	Totals
White 01	344	169	431	944
Black 02	239	317	230	786
Hispanic 03	59	13	16	88
Asian 04	45	38	34	117
Native American 05	6	4	2	12
Totals	693	541	713	1947



**Controlled Choice numbers account for students on Sabbatical and at Alternative Schools who will return to Home School.**



**Controlled Choice numbers account for students on Sabbatical and at Alternative Schools who will return to Home School.**

# Future Goals/Vision for Expansion

- The vision for expansion is to have the Family Information Center become a school-wide initiative that acts as the umbrella of services for children and families, and keeping in mind that the main focus is that we are an assignment center.
- The Family Information Center staff will ensure that all assignments are treated fairly and equitably, according to the rules of the Controlled Choice Plan as approved by the Central District Court of Illinois.
- Expansion will occur when every school is linked to a community service provider under the umbrella of the Family Information Center that will provide educational, social, emotional and physical support for students and families.